



EVERLAST LED VICTORY SHOE BOX 350W / 41,341LM

The EVERLAST LED VICTORY SHOE BOX 350W fixture achieves 41,341 LUMENS.

The EVERLAST LED VICTORY SHOE BOX offers enhanced illumination for a large outdoor area. Strategic placement of the die-cast aluminum VICTORY SHOE BOX will provide a powerful and effective light distribution (type V).

The sleek housing of the VICTORY SHOE BOX offers through-hole design to minimize the effects of extreme outdoor conditions.

Available sensors include on/off, bi-level, and dusk-to-dawn.

APPLICATION

Parking areas and garages, street and roadway lighting, automotive dealership, tennis court and walkway applications.

FEATURES & BENEFITS

- 10-year Limited Warranty.
- Inventronics LED Driver offers high performance and unprecedented quality.
- Performance engineered clear polycarbonate lens assembly delivers effective beam angles and reduces glare.
- Luxeon LED chips provide high flux density to enable directional and high lumen applications.

LED & OPTICAL ASSEMBLY

- Luxeon LED
- 80 CRI
- Type III or V Light Distribution
- LM-79 Tests in accordance with IESNA standards

APPROVALS / LISTINGS

- DLC Premium
- ETL Listed to UL1598
- EPA Rating: 1.46 ft²
- BUG Rating: B5-U0-G2
- IP65 per ANSI C126.25-2009
- Temperature rated -22° to 122°F (-30° to 50°C)
- CE / RoHS compliant
- LM80 & TM21 data available on request

MATERIALS

Diecast aluminum driver housing.

SIZE / WEIGHT (PACKAGED)

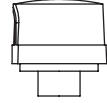
27.6" x 14.9" x 5.3" (36.8" x 17.0" x 8.8")
32.0 lbs. (36.0 lbs.)

MOUNTING HARDWARE

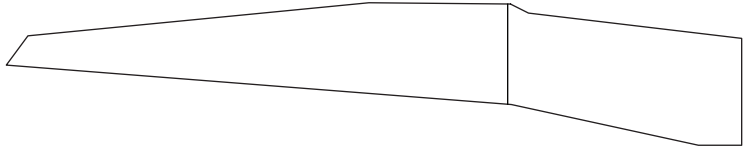
Two options available - adjustable u-bracket (AUB) & knuckle slip fitter (KSF).

FIXTURE

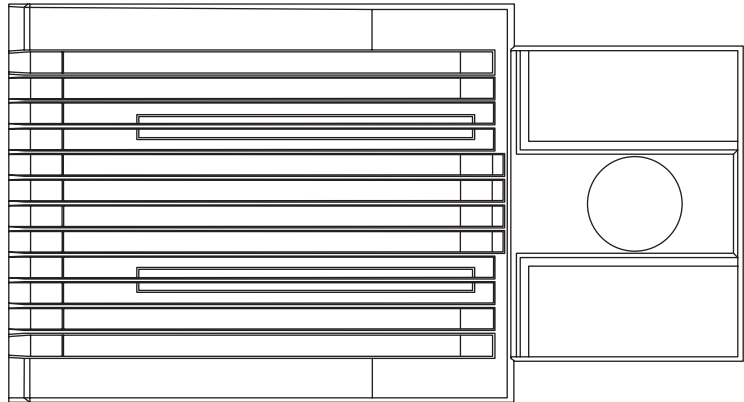
PC · BLPC
PHOTOCELL ·
BLANK PHOTOCELL



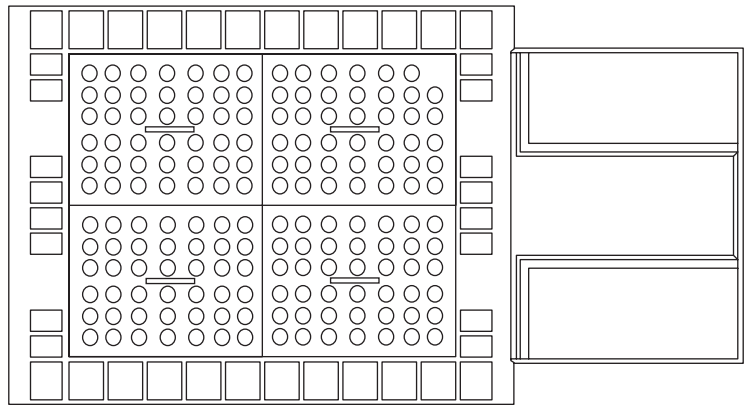
SIDE



TOP



FACE



BASE

EL-LED-VS-

350-

FIXTURE

EL-LED-VS-
EVERLAST LED VICTORY SHOE BOX

WATTAGE

350 WATT
41,341 LUMENS

VOLTAGE

UL UNIVERSAL
(120-277V AC)
UH UNIVERSAL
(347-480v AC)

ACCESSORY

COLOR TEMP.

- 65 6500K / 80 CRI
- 57 5700K / 80 CRI
- 50 5000K / 80 CRI
- 40 4000K / 80 CRI

DISTRIBUTION

V TYPE V

SENSOR

- OF ON / OFF
- BL BILEVEL
- PC NEMA PHOTOCELL
- BLPC BLANK PHOTOCELL

MOUNT (PAGE 2)

- AUB ADJUSTABLE U-BRACKET
- KSF KNUCKLE SLIP FITTER

OTHER

SP10 10kV SURGE PROTECTOR



EVERLAST LED VICTORY SHOE BOX

350W / 41,341LM

SPECS

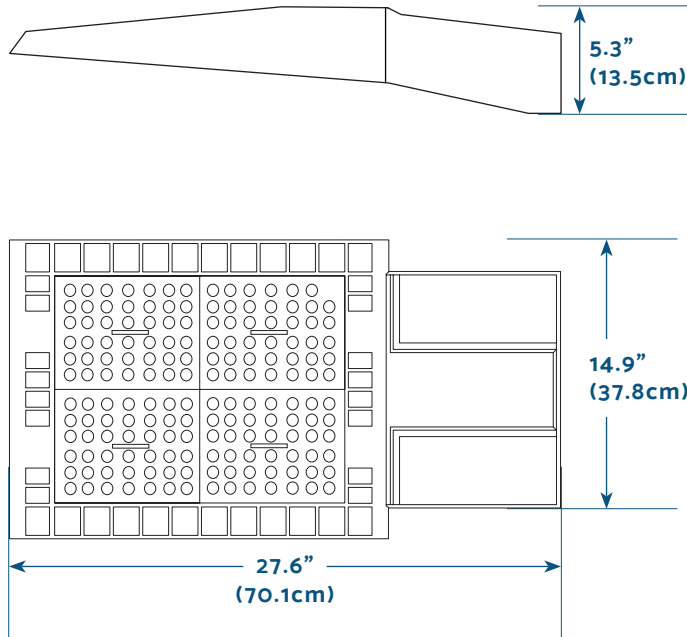
EMITTER (LUXEON) & DRIVER (INVENTRONICS)

SYSTEM WATTS (120-277V AC)	INITIAL DELIVERED LUMENS (5000K) 80CRI	NUMBER OF LEDS	TOTAL CURRENT / FIXTURE				
			120V AC	208V AC	240V AC	277V AC	480V AC
350	41,341	168	2.92	1.68	1.46	1.26	0.73

INPUT

VOLTAGE RANGE	FREQUENCY RANGE	POWER FACTOR	TOTAL HARMONIC DISTORTION (DURING OUTPUT LOAD)	EFFICIENCY (230V AC / 277V AC)
100-277V AC 347-480V AC	50 / 60 Hz	0.92	THD < 15%	>92%

DIMENSIONS



MOUNTS

