



## EverLast® Smart Light Series

### Induction Type III or V - Acorn Walkway Fixture

EverLast® Smart Light Fixtures incorporate step-dimming and on/off sensor controls for increased pedestrian safety and unmatched energy savings.

- **Lamp Rating:** 100,000 Hours
- **Lumen Maintenance:** 70% over 100,000 Hours
- **Step-dimming** ballast option dims to 50% power for increased energy savings
- **Energy Savings:** 50% - 70% over HPS and HID
- **Light Output:** 5000K, 85 CRI
- **Voltage:** 120-277 Standard, 347 and 480 volt available\*
- **Applications:** Parks, shopping malls, outlets, plazas, city halls, historic areas
- **Warranty:** 10 year warranty (see terms and conditions)

### Lamp Specifications

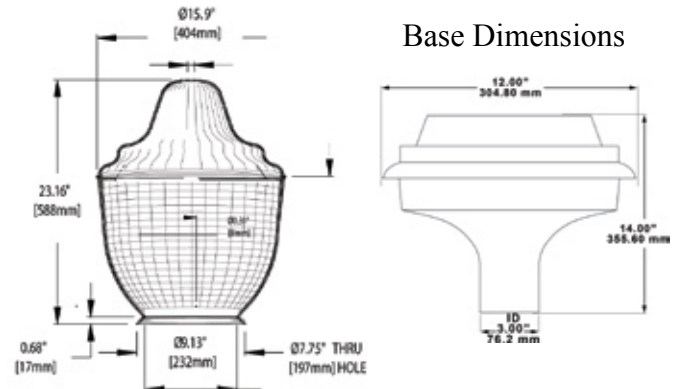
Wattage	Lumens	CRI	CCT (KELVIN)	Rated Life
EAWUS-EC-40W	3,350	82-85	5000	100,000 hours
EAWUS-EC-55W	4,650	82-85	5000	100,000 hours
EAWUS-EC-70W	5,900	82-85	5000	100,000 hours
EAWUS-EC-80W	7,150	82-85	5000	100,000 hours
EAWUS-EC-100W	8,400	82-85	5000	100,000 hours

### Ballast Specifications

System-Wattage	Input Voltage	Input Current	Input Freq.	Power Factor	Ambient Temp	THD
44W	120-277V/480V*	0.38-0.17A/ 0.10A	50/60Hz	>0.95	-30 to 130 F°	<10%
61W	120-277V/480V*	0.50-0.21A/ 0.13A	50/60Hz	>0.95	-30 to 130 F°	<10%
75W	120-277V/480V*	0.63-0.29A / 0.16A	50/60Hz	>0.95	-30 to 130 F°	<10%
90W	120-277V/480V*	0.70-0.32A/ 0.19A	50/60Hz	>0.95	-30 to 130 F°	<10%
111W	120-277V/480V*	0.93-0.42A/ 0.22A	50/60Hz	>0.95	-30 to 130 F°	<10%

### EverLast® Acorn Walkway Specifications

- Premium acrylic prismatic top or optional polycarbonate
- Type III or V prismatic refractor optics
- 9" Post-Top Capital fitter
- Features enhanced UV packages for long term performance
- Excellent lighting uniformity and distribution due to superior optics design
- Stainless Steel clamp band and aluminum neck ring



Legal Notice: Full Spectrum Solutions owns proprietary rights in the EverLast® Smart Light Series of fixtures in the form of pending patent applications in the US and PCT applications for International protection. One or more features of this system may be protected by one or more patent applications. Patent questions can be addressed in writing to the Law offices of: Lowe, Hauptman, Ham & Berner, LLP located at Suite 300, 1700 Diagonal Road, Alexandria, Virginia 22314 -- Patent Attorneys.

EverLast® Lighting A Product of Full Spectrum Solutions, Inc. 2009, All Rights Reserved

**888-383-7578**

**www.everlastlight.com**

2021 Wellworth Ave. Jackson Michigan, 49203 U.S.A.

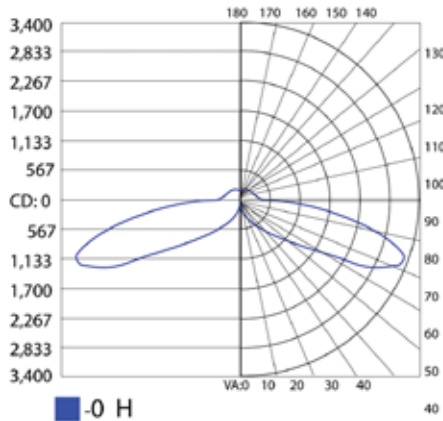
09\_09\_V3

**EverLast® Smart Light Series**  
**Induction Type III or V Acorn Walkway Fixture**

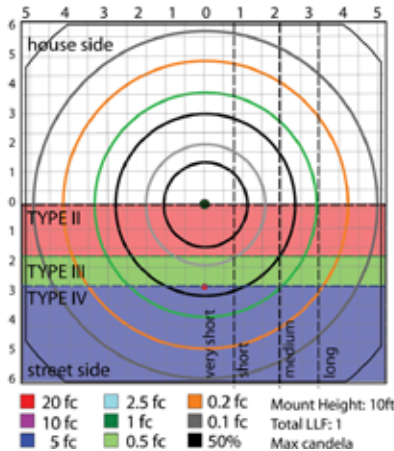
EverLast® Smart Light Fixtures incorporate step-dimming and on/off sensor controls for increased pedestrian safety and unmatched energy savings.

**Type V**

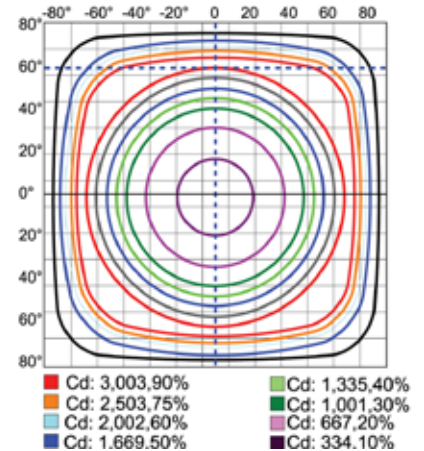
Polar Candela Distribution



ISO Foot Candle Plot

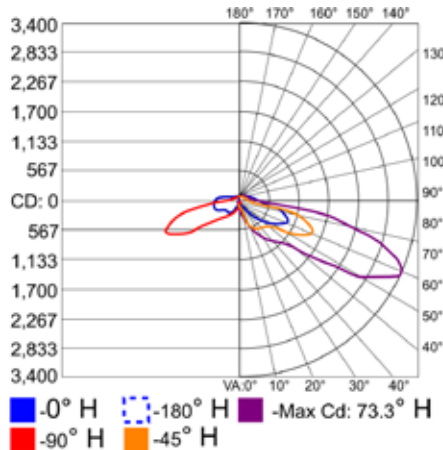


ISO Candela Plot

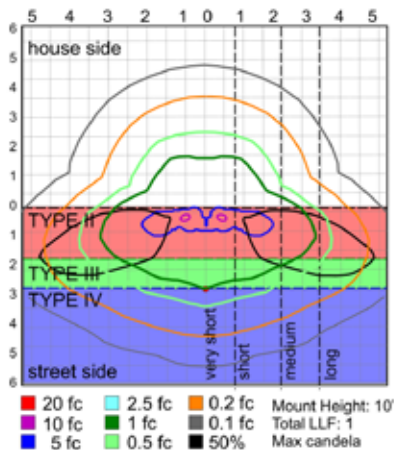


**Type III**

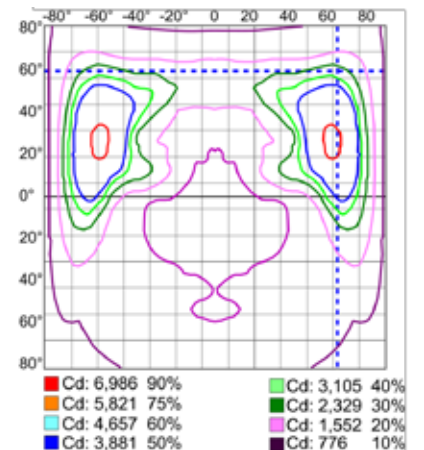
Polar Candela Distribution



ISO Foot Candle Plot



ISO Candela Plot



**Optional Finials (straight or flame)**



**Optional LiteLid®**

Night Sky Friendly LiteLid® -to reduce light pollution and light trespass, all of our acorn refractors can be outfitted with a metal LiteLid that rests on a rim inside the refractor.

These LiteLids are available in perforated versions so that just enough light comes through the tops to provide a pleasing appearance at nighttime, or non-perforated versions which reduce uplight to just 10%.



Legal Notice: Full Spectrum Solutions owns proprietary rights in the EverLast® Smart Light Series of fixtures in the form of pending patent applications in the US and PCT applications for International protection. One or more features of this system may be protected by one or more patent applications. Patent questions can be addressed in writing to the Law offices of: Lowe, Hauptman, Ham & Berner, LLP located at Suite 300, 1700 Diagonal Road, Alexandria, Virginia 22314 -- Patent Attorneys.